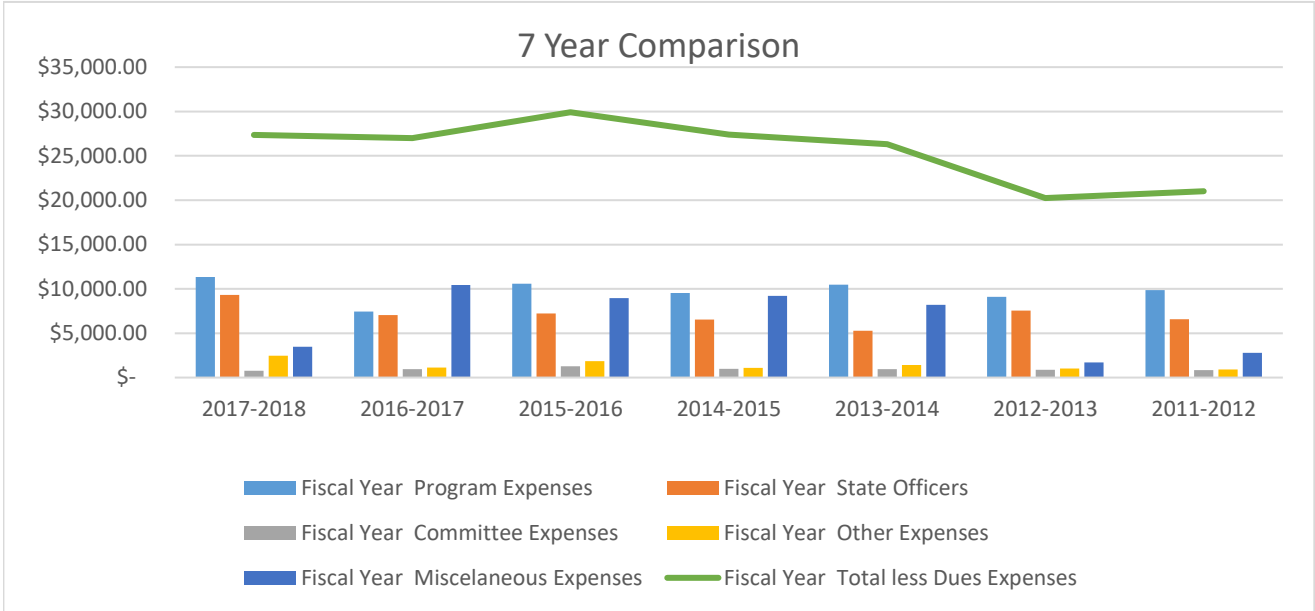


**Income for Sigma State Over Last Seven Years - WSO 2018-2019 Figures added in blue**

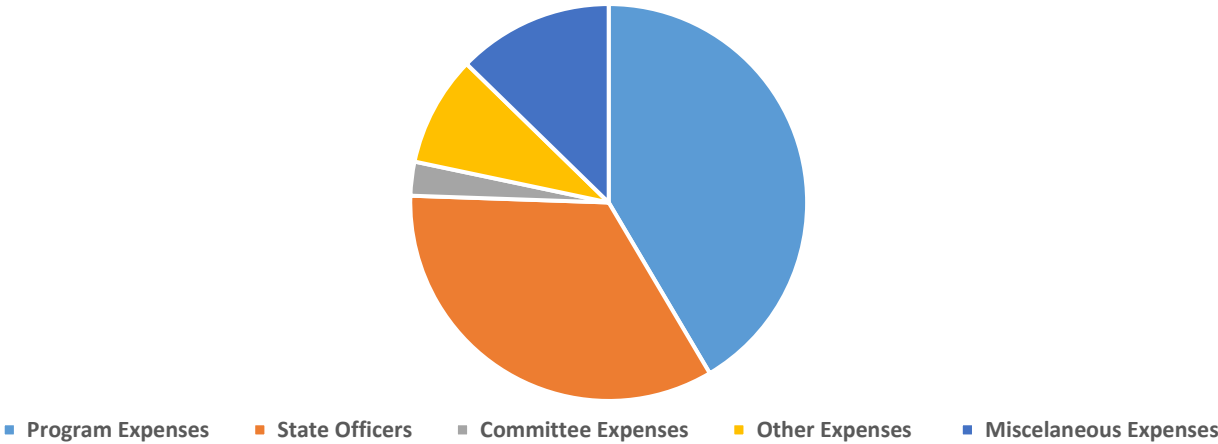
Fiscal Year	Active members	Reserved Members	Initiates	Scholarships GAEP Permanent	Registration Fees	Savings/ Interest	Total Income
	\$ 19.00	\$ 6.00	\$ 2.50				
2017-2018	\$ 11,115.00	\$ 480.00	\$ 65.00	\$ 4,040.00	\$ 1,770.00	\$ 1,549.00	\$ 19,019.00
2016-2017	\$ 11,362.00	\$ 474.00	\$ 50.00	\$ 8,000.00	\$ 1,638.00	\$ 2,658.00	\$ 24,182.00
2015-2016	\$ 12,350.00	\$ 420.00	\$ 100.00	\$ 7,800.00	\$ 2,625.00	\$ 744.00	\$ 24,039.00
2014-2015	\$ 12,844.00	\$ 462.00	\$ 82.50	\$ 9,300.00	\$ 3,345.00	\$ 42.00	\$ 26,075.50
2013-2014	\$ 12,863.00	\$ 450.00	\$ 72.50	\$ 7,500.00	\$ 3,300.00	\$ 265.00	\$ 24,450.50
2012-2013	\$ 13,813.00	\$ 420.00	\$ 72.50	\$ 1,000.00	\$ 3,234.00	\$ 258.00	\$ 18,797.50
2011-2012	\$ 14,839.00	\$ 492.00	\$ 70.00	\$ 600.00	\$ 5,489.00	\$ 1,653.00	\$ 23,143.00
<b>2018-2019</b>	<b>\$ 11,925.00</b>	<b>\$ 486.00</b>	<b>\$ 72.50</b>	<b>\$ 8,100.00</b>	<b>\$ 2,040.00</b>	<b>\$ 1,764.17</b>	<b>\$ 24,387.67</b>

Fiscal Year	Program Expenses	State Officers	Committee Expenses	Other Expenses	Miscellaneous Expenses	Total less Dues Expenses	Difference between income and expenses
	2017-2018	\$ 11,347.23	\$ 9,313.14	\$ 754.12	\$ 2,458.96	\$ 3,473.40	\$ 27,346.85
2016-2017	\$ 7,459.20	\$ 7,040.42	\$ 950.24	\$ 1,118.00	\$ 10,428.70	\$ 26,996.56	\$ (2,814.56)
2015-2016	\$ 10,589.87	\$ 7,235.45	\$ 1,280.39	\$ 1,860.19	\$ 8,947.75	\$ 29,913.65	\$ (5,874.65)
2014-2015	\$ 9,545.96	\$ 6,553.83	\$ 981.98	\$ 1,096.61	\$ 9,228.01	\$ 27,406.39	\$ (1,330.89)
2013-2014	\$ 10,456.97	\$ 5,294.17	\$ 962.48	\$ 1,399.15	\$ 8,201.23	\$ 26,314.00	\$ (1,863.50)
2012-2013	\$ 9,111.38	\$ 7,533.89	\$ 859.84	\$ 1,032.31	\$ 1,701.98	\$ 20,239.40	\$ (1,441.90)
2011-2012	\$ 9,863.76	\$ 6,589.25	\$ 828.95	\$ 918.80	\$ 2,791.97	\$ 20,992.73	\$ 2,150.27
<b>2018-2019</b>	<b>\$ 7,405.55</b>	<b>\$ 6,731.53</b>	<b>\$ 707.44</b>	<b>\$ 4,872.26</b>	<b>\$ 9,139.20</b>	<b>\$ 28,855.98</b>	<b>\$ (4,468.31)</b>

### Graphic Overview of Expenditures by Type



### 2017-2018 Expenditure Categories



- Miscellaneous Expenses-**
  - Scholarships
  - World Fellowship
- Other Expenses-**
  - Insurance, Bonding
  - Tax Prep
  - Contingency Costs
- Program Expenses -**
  - Action Grants
  - SS News
  - Workshops- Facility and materials
  - Convention support
  - Meeting Milage
- State Officers-**
  - Mileage
  - Stipend
  - Expenses

Fiscal Year	The Change of Assets Available to Balance the Budgets						
	End of the year Report Figures			Funding for General Fund Needs			
	*Income	*Expenses	Difference	General Balance		Permanent Fund	
<b>2018-2019</b>	\$ 47,955.89	\$ 53,475.98	\$ (5,520.09)	\$ 29,461.04		\$ 25,093.40	
2017-2018	\$ 45,484.00	\$ 53,594.00	\$ (8,110.00)	\$ 33,107.00		\$ 27,730.00	
2016-2017	\$ 50,858.00	\$ 53,763.00	\$ (2,905.00)	\$ 36,631.00		\$ 27,596.00	
2015-2016	\$ 52,931.00	\$ 58,715.00	\$ (5,784.00)	\$ 38,813.00		\$ 27,587.00	
2014-2015	\$ 56,263.00	\$ 57,462.00	\$ (1,199.00)	\$ 40,464.00		\$ 27,587.00	
2013-2014	\$ 60,526.00	\$ 56,393.00	\$ 4,133.00	\$ 42,678.00		\$ 26,221.00	
2012-2013	\$ 50,958.00	\$ 52,400.00	\$ (1,442.00)	\$ 42,704.00		\$ 24,175.00	
2011-2012	\$ 57,740.00	\$ 55,590.00	\$ 2,150.00	\$ 40,025.00		\$ 21,874.00	
	<i>*Includes the collection and distribution of International Dues and Fees</i>						